

School Census -2019

Education Statistics of Government Schools

Prepared by Statistics Branch of MOE



List of Statistical Tables	
Table	Page
1. At a Glance - Basic Statistics of Government Schools - 2019	1
2.1 Administrative Structure of Education by Province - 2019	2
2.2 Administrative Structure of Education by District - 2019	2
3. Summary Statistics of Government Schools - 2019	3
4. Summary Statistics of Government Schools by Students - 2019	5
5. Summary Statistics of Government Schools by Teachers - 2019	6
6. Comparison of Basic Statistics of National and Provincial Schools -2019	7
7. Grade 1 Admission Related Statistics of Government Schools -2019	8
8. Government Schools by Size of Student Population -2019	9
9. Government Schools by Size of Teacher Population -2019	10
10. Grade-wise Students of Government Schools by Sex and Medium of Study -2019	11
11. Teachers of Government Schools by Major Qualification Category -2019	13
12. Student Teacher Ratios (STRs) of Government Schools -2019	14

Census Date 2019 September 1st

1. At a Glance - Basic Statistics of Government Schools -2019

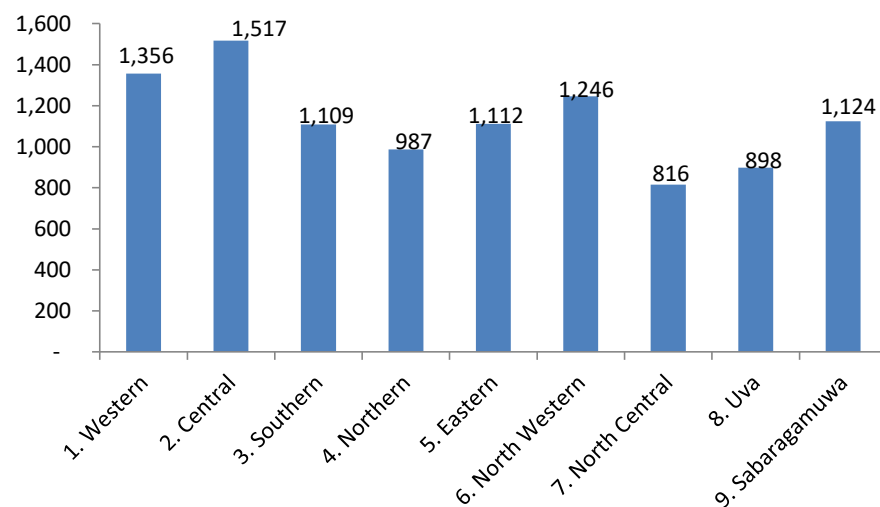
Schools					
All Government Schools	10,165	Schools by Language medium/s of Instruction		Schools by Student Population	
National Schools	373	Sinhala Medium Only	6,347	1-50 Students	1,468
Provincial Schools	9,792	Tamil Medium Only	3,030	51-100 Students	1,498
Type of School		Sinhala and Tamil Mediums	45	101-200 Students	2,152
1AB Schools	1,012	Sinhala and English Mediums	542	201-500 Students	2,738
1C Schools	1,899	Tamil and English Mediums	168	501-1,000 Students	1,378
Type 2 Schools	3,225	Sinhala, Tamil and English Mediums	33	1,001-1,500 Students	407
Type 3 Schools	4,029	School by Fuctional Grade Span		1,501-2,000 Students	209
School by Gender of the School		Grade 1-5	3,891	2,001-3,000 Students	209
Boys Schools	144	Grade 1-8	138	3,001-4,000 Students	74
Girls Schools	241	Grade 1-11	3,207	More than 4,000 Students	32
Mixed Schools	9,780	Grade 1-13	1,925		
		Grade 6-11	18		
		Grade 6-13	986		
Students					
All Students	4,061,653	Students by Language medium/s study			
Male Students	2,019,005	Sinhala Medium	2,981,235		
Female Students	2,042,648	Tamil Medium	988,773		
National Schools	798,372	Bilingual Mediums (Sinhala- English and Tamil-English)	91,645		
Provincial Schools	3,263,281				
Students by Type of School		Students by Grade Cycle of Studying			
1AB Schools	1,570,177	Primary Cycle (Grd 1-5)	1,656,441		
1C Schools	1,055,562	Junior Secondary Cycle (Grd 6-9)	1,359,061		
Type 2 Schools	760,957	Senior Secondary Lower Cycle (Grd 10-11)	627,477		
Type 3 Schools	674,957	Senior Secondary Upper Cycle (Grd 12-13)	411,161		
		Special Education Units	7,513		
Grade 1 Admissions					
Grade 1 Admissions	333,074			Grade 1 Admissions by Type of School	
Male Students	169,119	Sinhala Medium	247,101	1AB Schools	47,131
Female Students	163,955	Tamil Medium	85,973	1C Schools	75,074
National Schools	26,420			Type 2 Schools	75,711
Provincial Schools	306,654			Type 3 Schools	135,158

Teachers	
All Teachers	246,592
Male Teachers	62,467
Female Teachers	184,125
Graduate Teachers	119,323
Trained Teachers	120,848
Trainee Teachers	4,759
Untrained Teachers	1,518
Other Teachers	144
Teachers by Type of School	
1AB Schools	81,428
1C Schools	65,462
Type 2 Schools	61,138
Type 3 Schools	38,564

2.1: Administrative Structure of Education by Province -2019

Province	No. of Edu. Zones	No. of Edu. Divisions	All Govt. Schools	National Schools	Provincial Schools
1. Western	11	38	1,356	74	1,282
2. Central	15	40	1,517	54	1,463
3. Southern	11	39	1,109	67	1,042
4. Northern	12	35	987	22	965
5. Eastern	17	48	1,112	40	1,072
6. North Western	8	31	1,246	37	1,209
7. North Central	8	30	816	15	801
8. Uva	10	23	898	36	862
9. Sabaragamuwa	7	28	1,124	28	1,096
Total	99	312	10,165	373	9,792

No. of All Govt. Schools by Province -2019



2.2: Administrative Structure of Education by District -2019

Administrative District	No. of Edu. Zones	No. of Edu. Divisions	All Govt. Schools	National Schools	Provincial Schools
11. Colombo	4	14	401	37	364
12. Gampaha	4	13	536	19	517
13. Kalutara	3	11	419	18	401
21. Kandy	6	18	650	35	615
22. Matale	4	11	317	12	305
23. Nuwara Eliya	5	11	550	7	543
31. Galle	4	15	430	29	401
32. Matara	4	14	358	22	336
33. Hambantota	3	10	321	16	305
41. Jaffna	5	15	448	7	441
42. Mannar	2	5	134	5	129
43. Vavuniya	2	5	174	5	169
44. Mullaitivu	2	6	127	3	124
45. Kilinochchi	1	4	104	2	102
51. Batticaloa	5	14	360	13	347
52. Ampara	7	21	439	16	423
53. Trincomalee	5	13	313	11	302
61. Kurunegala	6	22	875	30	845
62. Puttalam	2	9	371	7	364
71. Anuradhapura	5	22	563	6	557
72. Polonnaruwa	3	8	253	9	244
81. Badulla	6	14	605	27	578
82. Moneragala	4	9	293	9	284
91. Ratnapura	4	16	600	14	586
92. Kegalle	3	12	524	14	510
Total	99	312	10,165	373	9,792

Source : School Census 2019

Govt. = Government

Edu. = Education

3. Summary Statistics of Government Schools -2019

Category	No. of Schools	%	No. of Students	%	No. of Teachers	%
All Government Schools	10,165		4,061,653		246,592	
Level of School						
National Schools	373	3.7	798,372	19.7	40,936	16.6
Provincial Schools	9,792	96.3	3,263,281	80.3	205,656	83.4
Type of School						
1AB Schools	1,012	10.0	1,570,177	38.7	81,428	33.0
1C Schools	1,899	18.7	1,055,562	26.0	65,462	26.5
Type 2 Schools	3,225	31.7	760,957	18.7	61,138	24.8
Type 3 Schools	4,029	39.6	674,957	16.6	38,564	15.6
School by Fuctional Grade Span						
Grade 1-5	3,891	38.3	654,465	16.1	36,939	15.0
Grade 1-8	138	1.4	20,492	0.5	1,625	0.7
Grade 1-11	3,207	31.5	758,583	18.7	60,921	24.7
Grade 1-13	1,925	18.9	1,687,321	41.5	93,028	37.7
Grade 6-11	18	0.2	2,374	0.1	217	0.1
Grade 6-13	986	9.7	938,418	23.1	53,862	21.8

1AB - Schools having Science Stream classes in Advanced Level
 1C - Schools having Advanced Level classes Other than Science Stream
 Type 2 - School Having classes only up to Grade 11
 Type 3 - School Having classes up to Grade 5 or Grade 8

Category	No. of Schools	%	No. of Students	%	No. of Teachers	%
School by Gender of the School						
Boys Schools	144	1.4	245,364	6.0	12,157	4.9
Girls Schools	241	2.4	378,962	9.3	18,460	7.5
Mixed Schools	9,780	96.2	3,437,327	84.6	215,975	87.6
Ethnicity of the School						
Sinhala Schools	6,925	68.1	3,047,842	75.0	178,924	72.6
Tamil Schools	2,302	22.6	588,658	14.5	42,348	17.2
Muslim Schools	938	9.2	425,153	10.5	25,320	10.3
Schools by Language medium/s of Instruction						
Sinhala Medium	6,347	62.4				
Tamil Medium	3,030	29.8				
Sinhala and Tamil Mediums	45	0.4				
Sinhala and English Mediums	542	5.3				
Tamil and English Mediums	168	1.7				
Sinhala, Tamil and English Mediums	33	0.3				
Plantation Estate Schools						
located outside the estate	72	0.7	44,576	1.1	2,435	1.0
located inside the estate	772	7.6	157,194	3.9	10,415	4.2

3. Summary Statistics of Government Schools -2019

Category	No. of Schools	%	No. of Students	%	No. of Teachers	%
School by Local Government Area						
Municipal Council	625	6.1	655,970	16.2	34,826	14.1
Urban Council (UC) Area	410	4.0	387,439	9.5	19,464	7.9
Pradesiya Sabha (PS) Area	9,130	89.8	3,018,244	74.3	192,302	78.0
Schools by Student Population						
1-50 Students	1,468	14.4	43,775	1.1	9,393	3.8
51-100 Students	1,498	14.7	111,615	2.7	15,119	6.1
101-200 Students	2,152	21.1	314,391	7.7	30,098	12.2
201-500 Students	2,738	26.9	880,176	21.7	58,364	23.7
501-1,000 Students	1,378	13.5	957,585	23.6	51,328	20.8
1,001-1,500 Students	407	4.0	491,512	12.1	24,146	9.8
1,501-2,000 Students	209	2.1	357,837	8.8	17,147	7.0
2,001-3,000 Students	209	2.1	501,772	12.4	23,326	9.5
3,001-4,000 Students	74	0.7	251,458	6.2	10,989	4.5
More than 4,000 Students	32	0.3	151,532	3.7	6,682	2.7

Category	No. of Schools	%	No. of Students	%	No. of Teachers	%
Schools by A/L Stream						

Bio Science	979		44,219	10.8		
Physical Science	936		45,765	11.1		
Arts	2,879		177,857	43.3		
Commerce	1,850		82,559	20.1		
Bio Technology	486		17,116	4.2		
Engineering Technology	448		30,130	7.3		
Not Specied Stream	104		1,316	0.3		
Vocational	168		12,199	3.0		
Schools by No. of Teachers						
Less than 10 Teachers	3,038	29.9	219,682	5.4	19,950	8.1
10-25 Teachers	4,299	42.3	999,299	24.6	74,401	30.2
26-50 Teachers	1,834	18.0	1,077,963	26.5	64,289	26.1
51-100 Teachers	713	7.0	953,410	23.5	49,161	19.9
More than 100 Teachers	281	2.8	811,299	20.0	38,791	15.7

Source : School Census 2019

4. Summary Statistics of Government Schools by Students - 2019

Category	Total Students	%	Male	%	Female	%	Category	Total Students	%	Male	%	Female	%
All Government Schools	4,061,653		2,019,005	49.7	2,042,648	50.3	Type of School						
Level of School							1AB Schools	1,570,177	38.7	767,670	48.9	802,507	51.1
National Schools	798,372	19.7	415,993	52.1	382,379	47.9	1C Schools	1,055,562	26.0	513,471	48.6	542,091	51.4
Provincial Schools	3,263,281	80.3	1,603,012	49.1	1,660,269	50.9	Type 2 Schools	760,957	18.7	389,812	51.2	371,145	48.8
Students by Grade of Studying							Type 3 Schools	674,957	16.6	348,052	51.6	326,905	48.4
Primary Cycle (Grades 1-5)	1,656,441	40.8	839,126	50.7	817,315	49.3	Students by Language medium/s study						
Junior Secondary Cycle (Grades 6-9)	1,359,061	33.5	682,448	50.2	676,613	49.8	Sinhala Medium Only	2,981,235	73.4	1,488,844	49.9	1,492,391	50.1
Senior Secondary Lower Cycle (Grades 10-11)*	627,477	15.4	310,306	49.5	317,171	50.5	Tamil Medium Only	988,773	24.3	490,446	49.6	498,327	50.4
Senior Secondary Upper Cycle (Grades 12-13)	411,161	10.1	182,572	44.4	228,589	55.6	Bilingual/ English Medium **	91,645	2.3	39,715	43.3	51,930	56.7
Special Edu. Units	7,513	0.2	4,553	60.6	2,960	39.4	Students by A/L Stream						
Ethnicity of the School Established							Bio Science	44,219	10.8	12,884	29.1	31,335	70.9
Sinhala Schools	3,047,842	75.0	1,518,401	49.8	1,529,441	50.2	Physical Science	45,765	11.1	28,568	62.4	17,197	37.6
Tamil Schools	588,658	14.5	293,603	49.9	295,055	50.1	Arts	177,857	43.3	59,248	33.3	118,609	66.7
Muslim Schools	425,153	10.5	207,001	48.7	218,152	51.3	Commerce Stream	82,559	20.1	39,900	48.3	42,659	51.7
Plantation Estate Schools							Bio-Technology	17,116	4.2	7,724	45.1	9,392	54.9
Located outside the estate	44,576	1.1	22,624	50.8	21,952	49.2	Engineering-Technology	30,130	7.3	26,067	86.5	4,063	13.5
Located inside the estate	157,194	3.9	78,576	50.0	78,618	50.0	Non Specified	1,316	0.3	597	45.4	719	54.6
							Vocational	12,199	3.0	7,584	62.2	4,615	37.8
Remarks: * - Grade 11 Repeaters are included. / **-Included both Sinhala-English & Tamil-English													

Source : School Census 2019

5. Summary Statistics of Government Schools by Teachers - 2019

Category	Total Teachers	% of Total	Male	Male %	Female	Female %		Category	Total Teachers	% of Total	Male	Male %	Female	Female %
All Government Schools	246,592		62,467	25.3	184,125	74.7		Teachers by Ethnicity						
Level of School								Sinhala	178,817	72.5	41,306	23.1	137,511	76.9
National Schools	40,936	16.6	11,042	27.0	29,894	73.0		Sri Lankan Tamil	33,459	13.6	10,062	30.1	23,397	69.9
Provincial Schools	205,656	83.4	51,425	25.0	154,231	75.0		Indian Tamil	9,333	3.8	2,966	31.8	6,367	68.2
Type of School								Muslim	24,770	10.0	8,088	32.7	16,682	67.3
1AB Schools	81,428	33.0	22,328	27.4	59,100	72.6		Others	213	0.1	45	21.1	168	78.9
1C Schools	65,462	26.5	16,929	25.9	48,533	74.1		Teachers by Religion						
Type 2 Schools	61,138	24.8	15,377	25.2	45,761	74.8		Buddhist	174,410	70.7	40,605	23.3	133,805	76.7
Type 3 Schools	38,564	15.6	7,833	20.3	30,731	79.7		Hindu	36,107	14.6	11,344	31.4	24,763	68.6
School by Gender of the School								Islam	24,948	10.1	8,144	32.6	16,804	67.4
Boys Schools	12,157	4.9	3,776	31.1	8,381	68.9		Catholic	9,107	3.7	1,882	20.7	7,225	79.3
Girls Schools	18,460	7.5	2,560	13.9	15,900	86.1		Christian	1,998	0.8	485	24.3	1,513	75.7
Mixed Schools	215,975	87.6	56,131	26.0	159,844	74.0		Other	22	0.0	7	31.8	15	68.2
Ethnicity of the School Established								Language Medium of Appointment of the Teachers						
Sinhala Schools	178,924	72.6	41,470	23.2	137,454	76.8		Sinhala Medium	170,320	69.1	39,991	23.5	130,329	76.5
Tamil Schools	42,348	17.2	12,941	30.6	29,407	69.4		Tamil Medium	65,018	26.4	20,561	31.6	44,457	68.4
Muslim Schools	25,320	10.3	8,056	31.8	17,264	68.2		English Medium	11,254	4.6	1,915	17.0	9,339	83.0
Teachers by Age								Teachers by Appointment Classification						
Less than 25 Years	207	0.1	49	23.7	158	76.3		Graduate Teachers	119,323	48.2	33,031	27.7	86,292	72.3
25-34 Years	61,847	25.1	12,532	20.3	49,315	79.7		Trained Teachers	120,848	48.9	28,079	23.2	92,769	76.8
35-44 Years	74,267	30.1	19,339	26.0	54,928	74.0		Trainee Teachers	4,759	1.9	925	19.4	3,834	80.6
45-54 Years	73,422	29.8	20,308	27.7	53,114	72.3		Untrained Teachers	1,518	0.6	396	26.1	1,122	73.9
55-59 Years	35,493	14.4	9,808	27.6	25,685	72.4		Other Teachers	144	0.1	36	25.0	108	75.0
60 & Above Years	1,356	0.5	431	31.8	925	68.2								
School by Local Government Area								Plantation Estate Schools						
MC/UC Area	54,290	22.0	11,921	22.0	42,369	78.0		Outside the estate	2,435	1.0	702	28.8	1,733	71.2
PS Area	192,302	78.0	50,546	26.3	141,756	73.7		Inside the estate	10,415	4.2	3,296	31.6	7,119	68.4

Source : School Census 2019

6. Comparison of Basic Statistics of National and Provincial Schools -2019													
Subject	All Govt. Schools	National Schools						Provincial Schools					
		Total	% of Total	No. of Males	Male %	No. of Females	Female %	Total	% of Total	No. of Males	Male %	No. of Females	Female %
All Government Schools													
No. of Schools	10,165	373	3.7					9,792	96.3				
No. of Students	4,061,653	798,372	19.7	415,993	52.1	382,379	47.9	3,263,281	80.3	1,603,012	49.1	1,660,269	50.9
No. of Teachers	246,592	40,936	16.6	11,042	27.0	29,894	73.0	205,656	83.4	51,425	25.0	154,231	75.0
Grade 1 Admissions	333,074	26,420	7.9	14,091	53.3	12,329	46.7	306,654	92.1	155,028	50.6	151,626	49.4
Schools by Type of School													
1AB Schools													
No. of Schools	1,012	346	34.2					666	65.8				
No. of Students	1,570,177	777,257	49.5	405,029	52.1	372,228	47.9	792,920	50.5	362,641	45.7	430,279	54.3
No. of Teachers	81,428	39,478	48.5	10,633	26.9	28,845	73.1	41,950	51.5	11,695	27.9	30,255	72.1
Grade 1 Admissions	47,131	25,449	54.0	13,633	53.6	11,816	46.4	21,682	46.0	9,460	43.6	12,222	56.4
1C Schools													
No. of Schools	1,899	26	1.4					1,873					
No. of Students	1,055,562	21,081	2.0	10,930	51.8	10,151	48.2	1,034,481	98.0	502,541	48.6	531,940	51.4
No. of Teachers	65,462	1,447	2.2	403	27.9	1,044	72.1	64,015	97.8	16,526	25.8	47,489	74.2
Grade 1 Admissions	75,074	971	1.3	458	47.2	513	52.8	74,103	98.7	36,637	49.4	37,466	50.6
Type 2 Schools													
No. of Schools	3,225	1	0.0					3,224					
No. of Students	760,957	34	0.0	34	100.0	-	-	760,919	100.0	389,776	51.2	371,143	48.8
No. of Teachers	61,138	11	0.0	6	54.5	5	45.5	61,127	100.0	15,371	25.1	45,756	74.9
Grade 1 Admissions	75,711	-	-	-	-	-	-	75,711	100.0	38,933	51.4	36,778	48.6
Type 3 Schools													
No. of Schools	4,029	-	-					4,029					
No. of Students	674,957	-	-	-	-	-	-	674,957	100.0	348,054	51.6	326,903	48.4
No. of Teachers	38,564	-	-	-	-	-	-	38,564	100.0	7,833	20.3	30,731	79.7
Grade 1 Admissions	135,158	-	-	-	-	-	-	135,158	100.0	69,998	51.8	65,160	48.2

Source : School Census 2019

7. Grade 1 Admission Related Statistics of Government Schools -2019

Subject	Schools Have Grade 1	Grd 1 Students	% of Total	Grd 1 Male Students	Male %	Grd 1 Female Students	Female %	NO Grade 1 Applications/ Admissions
All Government Schools	9,151	333,074		169,119	50.8	163,955	49.2	88
Level of School								
National Schools	177	26,420	7.9	14,091	53.3	12,329	46.7	0
Provincial Schools	8,974	306,654	92.1	155,028	50.6	151,626	49.4	88
Type of School								
1AB Schools	370	47,131	14.2	23,093	49.0	24,038	51.0	0
1C Schools	1,546	75,074	22.5	37,095	49.4	37,979	50.6	0
Type 2 Schools	3,205	75,711	22.7	38,933	51.4	36,778	48.6	20
Type 3 Schools	4,030	135,158	40.6	69,998	51.8	65,160	48.2	68
Language medium of study								
Sinhala Medium*	6,197	247,798	74.4	125,921	50.8	121,877	49.2	65
Tamil Medium	2,954	85,276	25.6	43,198	50.7	42,078	49.3	23
Ethnicity of the School Established								
Sinhala Schools	6,175	246,195	73.9	125,228	50.9	120,967	49.1	64
Tamil Schools	2,127	49,288	14.8	25,182	51.1	24,106	48.9	22
Muslim Schools	849	37,591	11.3	18,709	49.8	18,882	50.2	2
School by Local Government Area								
MC/UC Area	896	67,095	20.1	33,784	50.4	33,311	49.6	3
PS Area	8,255	265,979	79.9	135,335	50.9	130,644	49.1	85
Schools by Student Population								
1-50 Students	1,459	8,887	2.7	4,598	51.7	4,289	48.3	82
51-100 Students	1,482	18,724	5.6	9,773	52.2	8,951	47.8	6
101-200 Students	2,102	42,662	12.8	22,046	51.7	20,616	48.3	
201-500 Students	2,476	94,130	28.3	48,422	51.4	45,708	48.6	
501-1,000 Students	1,044	84,025	25.2	41,978	50.0	42,047	50.0	
More than 1,000 Students	588	84,646	25.4	42,302	50.0	42,344	50.0	

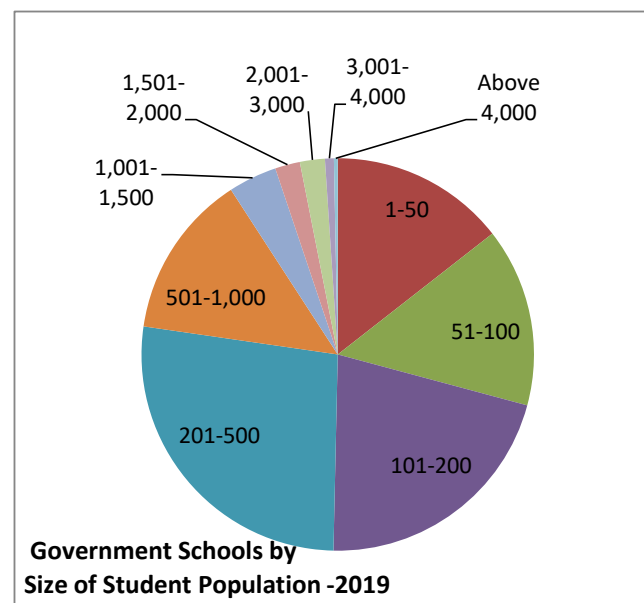
Source : School Census 2019

8. Government Schools by Size of Student Population -2019

Student Population	Level of School		Type of School				Total	%
	National	Provincial	1AB	1C	Type 2	Type 3		
1-50	1	1,467	-	4	135	1,329	1,468	14.4
51-100	-	1,498	1	22	515	960	1,498	14.7
101-200	-	2,152	3	170	1,169	810	2,152	21.2
201-500	7	2,731	113	854	1,179	592	2,738	26.9
501-1,000	56	1,322	269	645	177	287	1,378	13.6
1,001-1,500	60	347	191	145	29	42	407	4.0
1,501-2,000	63	146	144	45	12	8	209	2.1
2,001-3,000	106	103	186	14	8	1	209	2.1
3,001-4,000	51	23	73	-	1	-	74	0.7
Above 4,000	29	3	32	-	-	-	32	0.3

Student Population	Grade Span						Total
	Grd 1-5	Grd 1-8	Grd 1-11	Grd 1-13	Grd 6-11	Grd 6-13	
1-50	1,299	30	129	2	6	2	1,468
51-100	920	40	512	10	3	13	1,498
101-200	765	45	1,163	133	6	40	2,152
201-500	573	19	1,176	711	3	256	2,738
501-1,000	285	2	177	582	-	332	1,378
1,001-1,500	42	-	29	174	-	162	407
1,501-2,000	6	2	12	108	-	81	209
2,001-3,000	1	-	8	123	-	77	209
3,001-4,000	-	-	1	56	-	17	74
Above 4,000	-	-	-	26	-	6	32

Source : School Census 2019



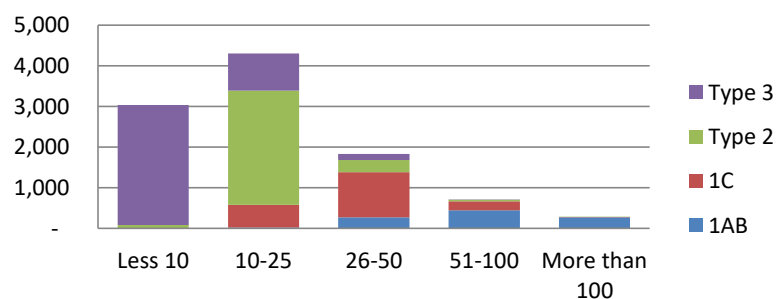
9. Government Schools by Size of Teacher Population -2019

No of Teachers	Level of School		Type of School				Total
	National	Provincial	1AB	1C	Type 2	Type 3	
Less 10	-	3,038	1	3	77	2,957	3,038
10-25	1	4,298	22	555	2,812	910	4,299
26-50	25	1,809	269	1,113	300	152	1,834
51-100	146	567	449	221	33	10	713
More than 100	201	80	271	7	3	-	281

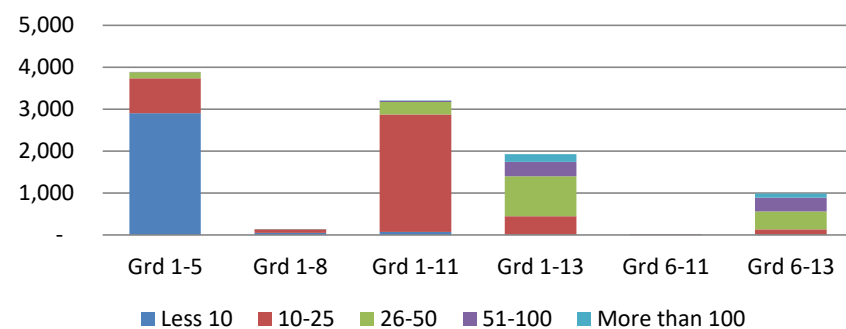
No of Teachers	Grade Span						Total
	Grd 1-5	Grd 1-8	Grd 1-11	Grd 1-13	Grd 6-11	Grd 6-13	
Less 10	2,905	52	72	1	5	3	3,038
10-25	829	81	2,799	449	13	128	4,299
26-50	149	3	300	950	-	432	1,834
51-100	8	2	33	343	-	327	713
More than 100	-	-	3	182	-	96	281

Source : School Census 2019

Schools by Type of School and No. of Teachers - 2019



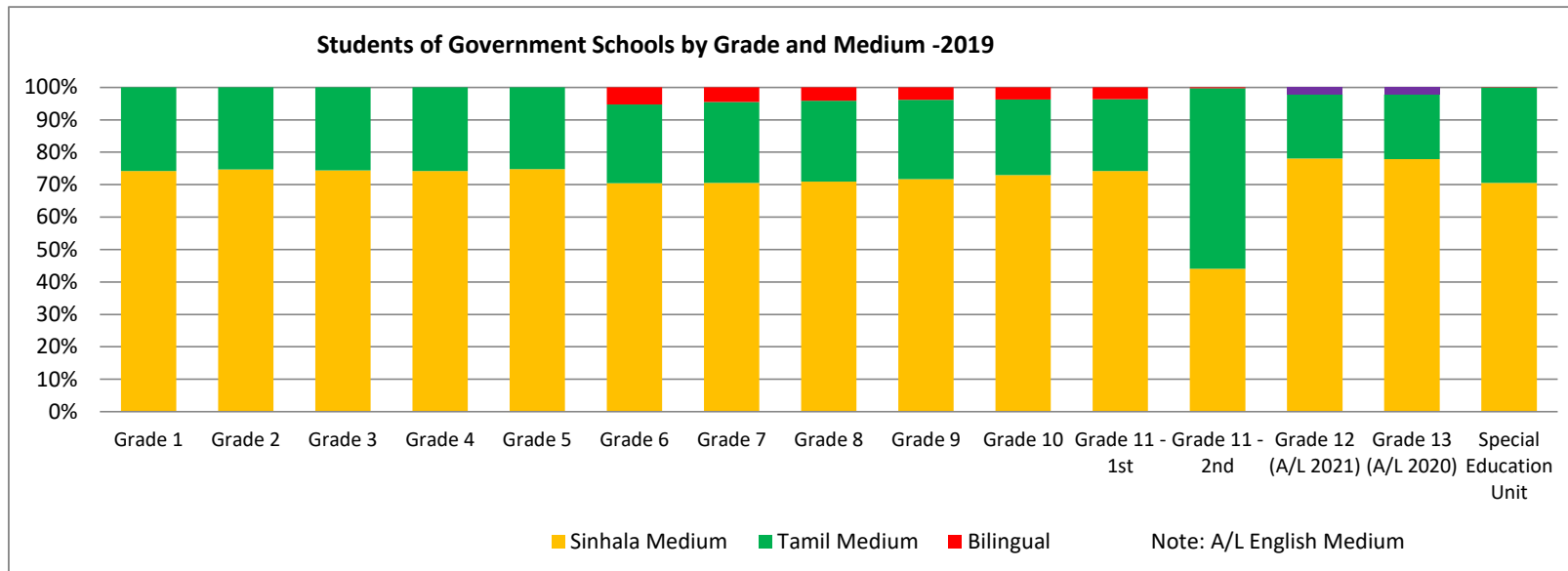
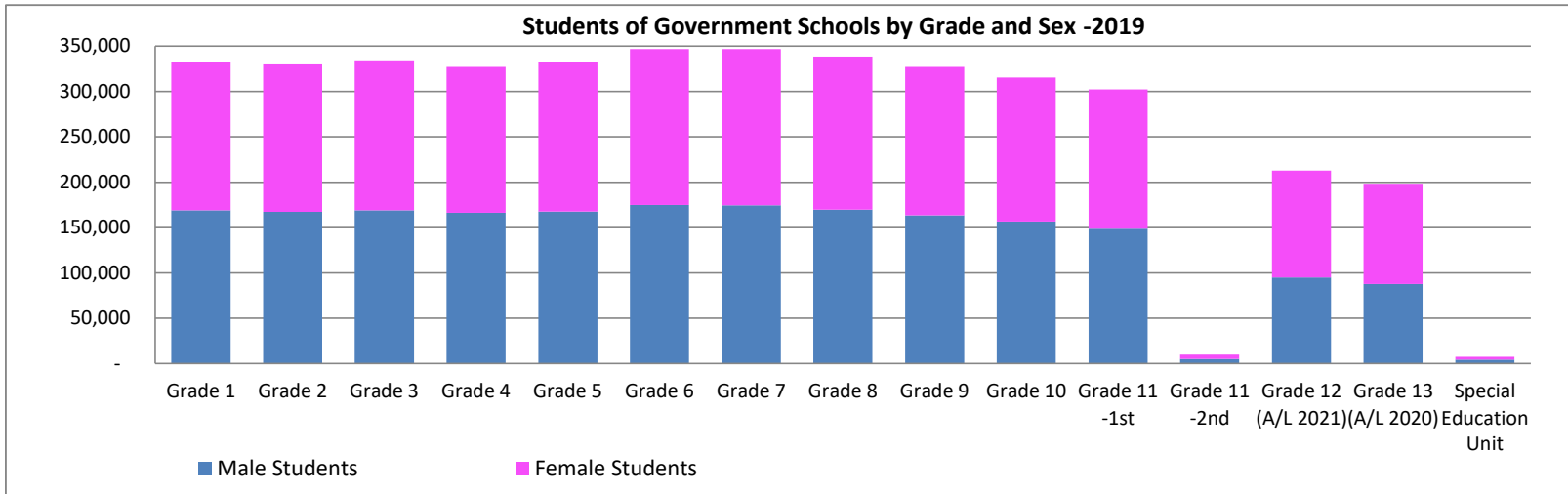
Schools by Grade Span of the School and No. of Teachers -2019



10. Grade-wise Students of Government Schools by Sex and Medium of Study -2019											
Grade	Total Students	Male Students	%	Female Students	%	Sinhala Medium	%	Tamil Medium	%	Bilingual	%
Grade 1	333,074	169,119	50.8	163,955	49.2	247,101	74.2	85,973	25.8	-	-
Grade 2	329,792	167,210	50.7	162,582	49.3	246,272	74.7	83,520	25.3	-	-
Grade 3	334,334	168,868	50.5	165,466	49.5	248,705	74.4	85,629	25.6	-	-
Grade 4	327,080	166,248	50.8	160,832	49.2	242,630	74.2	84,450	25.8	-	-
Grade 5	332,161	167,681	50.5	164,480	49.5	248,291	74.8	83,870	25.2	-	-
Primary Cycle (Grd 1-5)	1,656,441	839,126	50.7	817,315	49.3	1,232,999	74.4	423,442	25.6	-	-
Grade 6	346,781	174,728	50.4	172,053	49.6	244,383	70.5	84,151	24.3	18,247	5.3
Grade 7	346,741	174,477	50.3	172,264	49.7	244,679	70.6	86,520	25.0	15,542	4.5
Grade 8	338,361	169,711	50.2	168,650	49.8	239,937	70.9	84,392	24.9	14,032	4.1
Grade 9	327,178	163,532	50.0	163,646	50.0	234,587	71.7	80,077	24.5	12,514	3.8
Junior Secondary Cycle (Grd 6-9)	1,359,061	682,448	50.2	676,613	49.8	963,586	70.9	335,140	24.7	60,335	4.4
Grade 10	315,290	156,544	49.7	158,746	50.3	230,119	73.0	73,537	23.3	11,634	3.7
Grade 11	302,291	148,734	49.2	153,557	50.8	224,246	74.2	67,181	22.2	10,864	3.6
Grade 11 -2nd Attempt	9,896	5,028	50.8	4,868	49.2	4,365	44.1	5,507	55.6	24	0.2
Senior Secondary Lower Cycle (Grd 10-11)- O/L*	627,477	310,306	49.5	317,171	50.5	458,730	73.1	146,225	23.3	22,522	3.6
Grade 12 (A/L 2021)	212,837	94,878	44.6	117,959	55.4	166,192	78.1	42,118	19.8	4,527	2.1
Grade 13 (A/L 2020)	198,324	87,694	44.2	110,630	55.8	154,423	77.9	39,640	20.0	4,261	2.1
Senior Secondary Upper Cycle (Grd 12-13)- A/L	411,161	182,572	44.4	228,589	55.6	320,615	78.0	81,758	19.9	8,788	2.1
Special Education Unit	7,513	4,553	60.6	2,960	39.4	5,305	70.6	2,208	29.4	-	-
All Students	4,061,653	2,019,005	49.7	2,042,648	50.3	2,981,235	73.4	988,773	24.3	91,645	2.3

* - included repeaters

Source : School Census 2019



11. Teachers of Government Schools by Appointment Category -2019

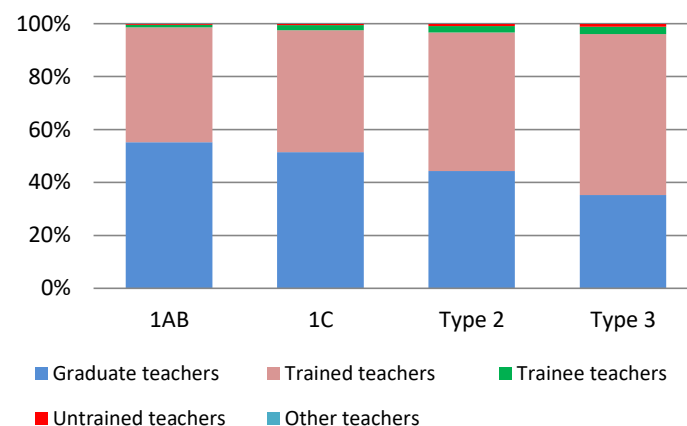
Level of School	Graduate teachers	Trained teachers	Trainee teachers	Untrained teachers	Other teachers	Total Teachers
National	19,552	20,902	320	115	21	40,936
Provincial	99,771	99,946	4,439	1,403	123	205,656
Total	119,323	120,848	4,759	1,518	144	246,592
Type of School	Graduate teachers	Trained teachers	Trainee teachers	Untrained teachers	Other teachers	Total Teachers
1AB	44,890	35,196	872	282	32	81,428
1C	33,631	30,097	1,267	340	37	65,462
Type 2	27,165	32,060	1,521	497	43	61,138
Type 3	13,637	23,495	1,099	399	32	38,564
Total	119,323	120,848	4,759	1,518	144	246,592

Grade Span	Graduate teachers	Trained teachers	Trainee teachers	Untrained teachers	Other teachers	Total Teachers
Grd 1-5	13,126	22,465	1,062	357	28	36,939
Grd 1-8	512	1,030	37	42	4	1,625
Grd 1-11	27,045	31,974	1,510	497	43	60,921
Grd 1-13	46,984	43,786	1,694	428	54	93,028
Grd 6-11	119	87	11	-	-	217
Grd 6-13	31,537	21,506	445	194	15	53,862
Total	119,323	120,848	4,759	1,518	144	246,592

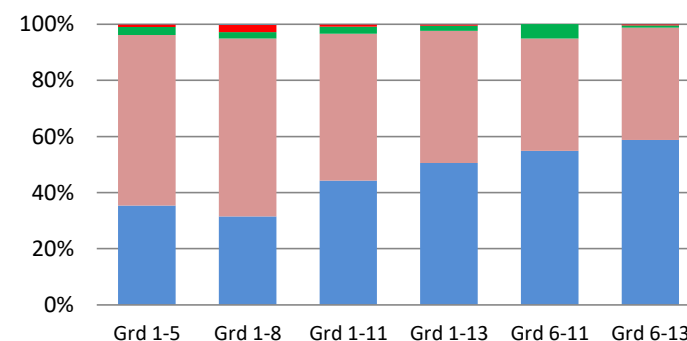
Source : School Census 2019

1AB - Schools having Science Stream classes in Advanced Level
 1C - Schools having Advanced Level classes Other than Science Stream
 Type 2 - School Having classes only up to Grade 11
 Type 3 - School Having classes up to Grade 5 or Grade 8

Teachers of Govt. Schools by Major Qualification Category and Type of School -2019



Teachers of Govt. Schools by Major Qualification Category and Grade Span of the School - 2019



12. Student Teacher Ratios (STRs) of Government Schools -2019										
Category	No. of Schools	No. of Students	No. of Teachers	STR		Category	No. of Schools	No. of Students	No. of Teachers	STR
All Government Schools	10,165	4,061,653	246,592	16.5		Schools by Student Population				
Level of School						1-50 Students	1,468	43,775	9,393	4.7
National Schools	373	798,372	40,936	19.5		51-100 Students	1,498	111,615	15,119	7.4
Provincial Schools	9,822	3,375,656	208,158	16.2		101-200 Students	2,152	314,391	30,098	10.4
						201-500 Students	2,738	880,176	58,364	15.1
Type of School						501-1,000 Students	1,378	957,585	51,328	18.7
1AB Schools	1,012	1,570,177	81,428	19.3		1,001-1,500 Students	407	491,512	24,146	20.4
1C Schools	1,899	1,055,562	65,462	16.1		1,501-2,000 Students	209	357,837	17,147	20.9
Type 2 Schools	3,225	760,957	61,138	12.4		2,001-3,000 Students	209	501,772	23,326	21.5
Type 3 Schools	4,029	674,957	38,564	17.5		3,001-4,000 Students	74	251,458	10,989	22.9
						More than 4,000 Students	32	151,532	6,682	22.7
Ethnicity of the School										
Sinhala Schools	6,925	3,047,842	178,924	17.0						
Tamil Schools	2,302	588,658	42,348	13.9						
Muslim Schools	938	425,153	25,320	16.8						
Plantation Estate Schools										
located outside the estate	72	44,576	2,435	18.3						
located inside the estate	772	157,194	10,415	15.1						

Source : School Census 2019

1AB - Schools having Science Stream classes in Advanced Level
 1C - Schools having Advanced Level classes Other than Science Stream
 Type 2 - School Having classes only up to Grade 11
 Type 3 - School Having classes up to Grade 5 or Grade 8

